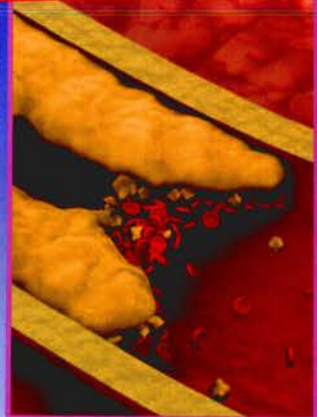


# 1 Blood



plasma



clot



red blood cell

Donor Blood Type	Eligible Recipients
Type A	Type A, Type AB
Type B	Type B, Type AB
Type AB	Type AB
Type O	All Types

## Get ready!

1 Before you read the passage, talk about these questions.

- 1 What is the purpose of blood donation?
- 2 What different blood types are there?

## Reading

2 Read the donor information letter. Then, mark the following statements as true (T) or false (F).

- 1 ☐ Donor Ann Lee is a universal donor.
- 2 ☐ The blood bank mostly needs donors with Types B and AB.
- 3 ☐ Donors risk clots in blood vessels when they give blood.

### Silverton Community Blood Bank Donor Introduction

Donor Name: Ann Lee

Blood Type: O -

Dear Donor,

Thank you for giving blood. Your blood may save the life of someone in need.

At SCBB, we provide blood for **transfusions** to needy recipients. Not everyone can receive every type of blood. Each person's **red blood cells** carry different antibodies. We are always looking for donors with **Type O**, since everyone's blood is **compatible** with Type O. If you are one of these **universal donors**, we encourage you to donate blood frequently. Recipients with rarer types like **Type B** and **Type AB** are especially in need of your help. Of course we also accept **Type A** since plenty of people can use that type, too.

Our on-site labs analyze each sample of **plasma** to ensure we're providing safe blood. We know that giving recipients the wrong type can cause blood **clots**. While some clotting is necessary to form **platelets**, clotting within blood vessels can be very dangerous. We also screen all donors for infectious diseases like Hepatitis and HIV.

## Vocabulary

3 Fill in the blanks with the correct words and phrases from the word bank.

### Word BANK

Type O      compatible      Type AB  
universal donor      transfusion

- 1 This man needs a(n) \_\_\_\_\_ now or he'll bleed to death.
- 2 It's okay to give Type A blood to someone who has \_\_\_\_\_.
- 3 The blood bank encourages every \_\_\_\_\_ to donate as often as possible.
- 4 If your blood is \_\_\_\_\_, you can give blood to anyone.
- 5 The hospital does not have any blood that is \_\_\_\_\_ with the patient's blood.



- 4 Place the words and phrases from the word bank under the correct heading.

## Word BANK

platelet      plasma      Type A  
red blood cell      Type B      clot

Blood Parts	Blood Groups	Stop Blood Loss
_____	_____	_____
_____	_____	_____

- 5 Listen and read the donor information letter again. What is the danger of using the wrong blood type for a transfusion?

## Listening

- 6 Listen to a conversation between a nurse and a blood donor. Choose the correct answers.

- What is the conversation mainly about?
  - receiving a blood transfusion
  - determining the man's blood type
  - explaining compatible blood types
  - describing how platelets form clots
- Who is likely to receive the man's blood?
  - recipients with Type AB
  - recipients with Type B
  - recipients with Type O
  - recipients with any type

- 7 Listen again and complete the conversation.

Nurse: Okay, Mr. Lewis, we're almost done taking your blood.  
1 \_\_\_\_\_ for a little longer.

Donor: Sure. So, where will my blood go?

Nurse: Our facility provides blood to local hospitals and surgical centers for 2 \_\_\_\_\_.

Donor: I see. So 3 \_\_\_\_\_ receive my blood.

Nurse: Not quite. Your blood is Type A, which means that it's only compatible with other people who have Types A and AB. We can't give your blood to someone with 4 \_\_\_\_\_.

Donor: Really? What happens if someone gets a transfusion with 5 \_\_\_\_\_?

Nurse: That can be 6 \_\_\_\_\_, or even fatal.

## Speaking

- 8 With a partner, act out the roles below based on Task 7. Then, switch roles.

### USE LANGUAGE SUCH AS:

*We're almost done ...*

*What happens if ... ?*

*That can be ... or even ...*

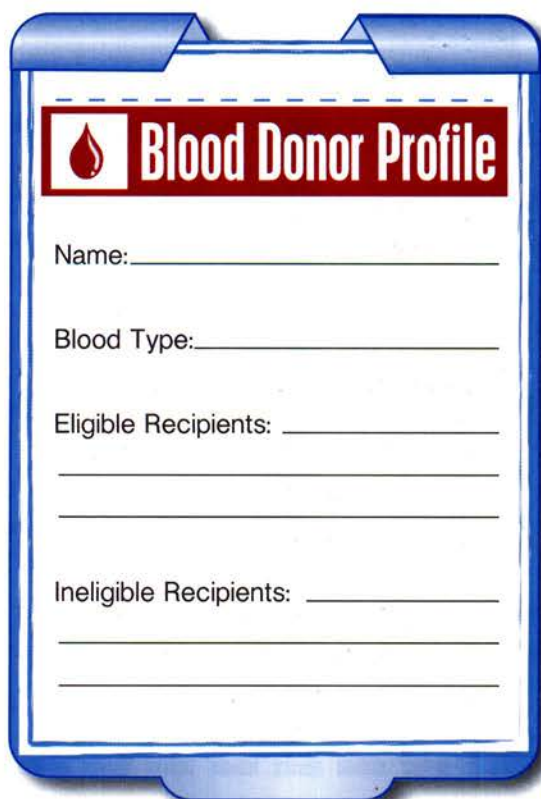
**Student A:** Student A: You are a nurse. Talk to Student B about:

- a blood donation
- his or her blood type
- who can receive the blood

**Student B:** You are a blood donor. Talk to Student A about your blood donation.

## Writing

- 9 Use the conversation from Task 8 to complete the donor profile.



**Blood Donor Profile**

Name: \_\_\_\_\_

Blood Type: \_\_\_\_\_

Eligible Recipients: \_\_\_\_\_

\_\_\_\_\_

Ineligible Recipients: \_\_\_\_\_

\_\_\_\_\_